

ONE SIGNIFICANT WEAKNESS OF SATELLITE IMAGERY IS THE PERCENTAGE OF IMAGES THAT CONTAIN CLOUDS, THUS RENDERING THE GROUND SUBJECT MATTER OUT OF VIEW

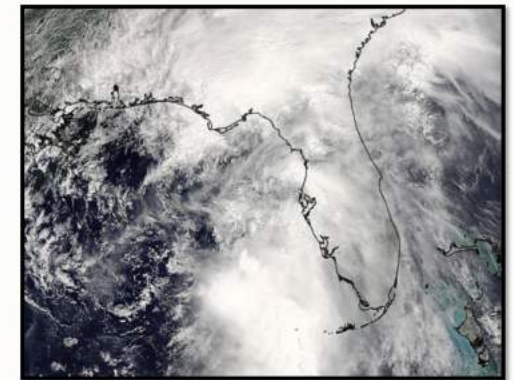


SAMPLE SCENARIO : TROPICAL STORM COLIN, FLORIDA, UNITES STATES , JUNE 2016

- CLOUD COVER PREVENTED SATELLITE FROM CAPTURING USEFUL IMAGERY
- AREA REMAINED COVERED BY CLOUD FOR SEVERAL DAYS POST STORM
- RE-DIRECTING SATELLITES WOULD NOT HAVE BEEN A SOLUTION DUE TO LINGERING CLOUD COVER



DOPPLER IMAGE



SATELLITE IMAGE

ROBOFLIGHT SOLUTION :

- FLEW BELOW THE CLOUD COVER AT APPROXIMATELY 1500 ' AGL
- PROVIDED REAL-TIME IMAGERY
- OFFERED CLIENT ENHANCED SPATIAL RESOLUTION COMPARED TO ANY SATELLITE

